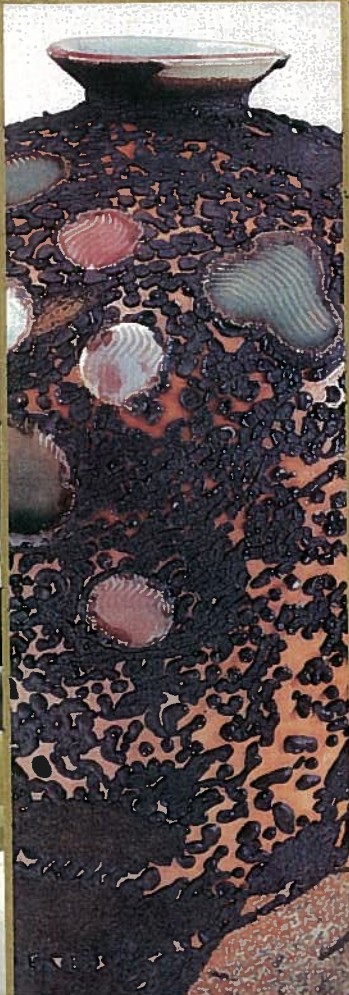
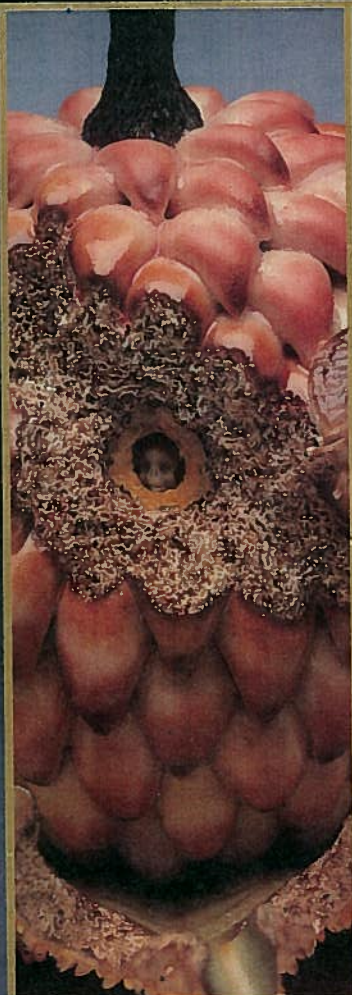


MASTERS

PORCELAIN

major works by leading ceramists





BENZLE

Curtis Benzle

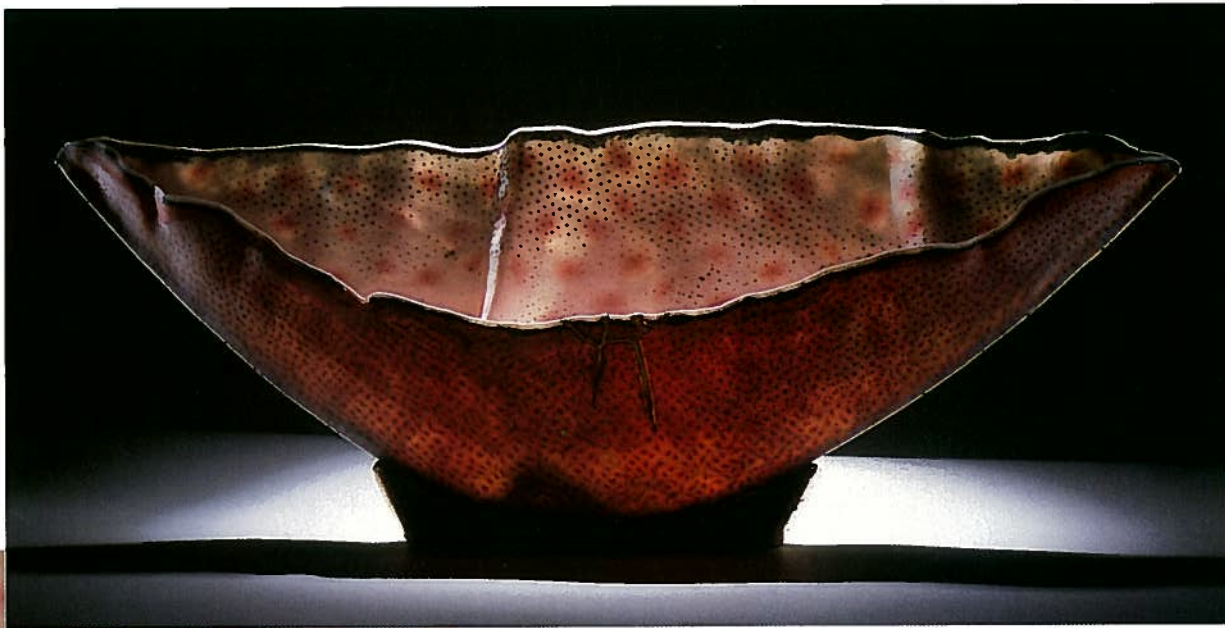
A MASTER OF COLORED TRANSLUCENT PORCELAIN, Curtis Benzle produces incredibly thin forms that glow like stained glass. His hand-built vessels, often bowl-shaped, offer a complexity of overlapping images formed from slabs taken from intricately patterned blocks of colored porcelain. Layering these slabs, Benzle creates vessels with distinctly different interior and exterior patterns that merge softly as light floods through the thin porcelain. His work draws the viewer into an intimate reality with a vision that initially suggests a landscape but ultimately is more personal and colorful.



Life Flutters By | 2003 ▶

7 x 7 x 4 inches (17.8 x 17.8 x 10.2 cm)
Hand-built porcelain; nerikomi, slip
painting, inlay; unglazed; electric fired,
cone 8; 23k gold leaf
Photo by artist

"I struggle with difficult materials, invent frustrating techniques, and tolerate relentless failure. My goal is both elusive and seductively possible. I have an unflinching desire to give form to feeling—to connect myself and my audience with a better place and to express some of what is so wonderful in our world."

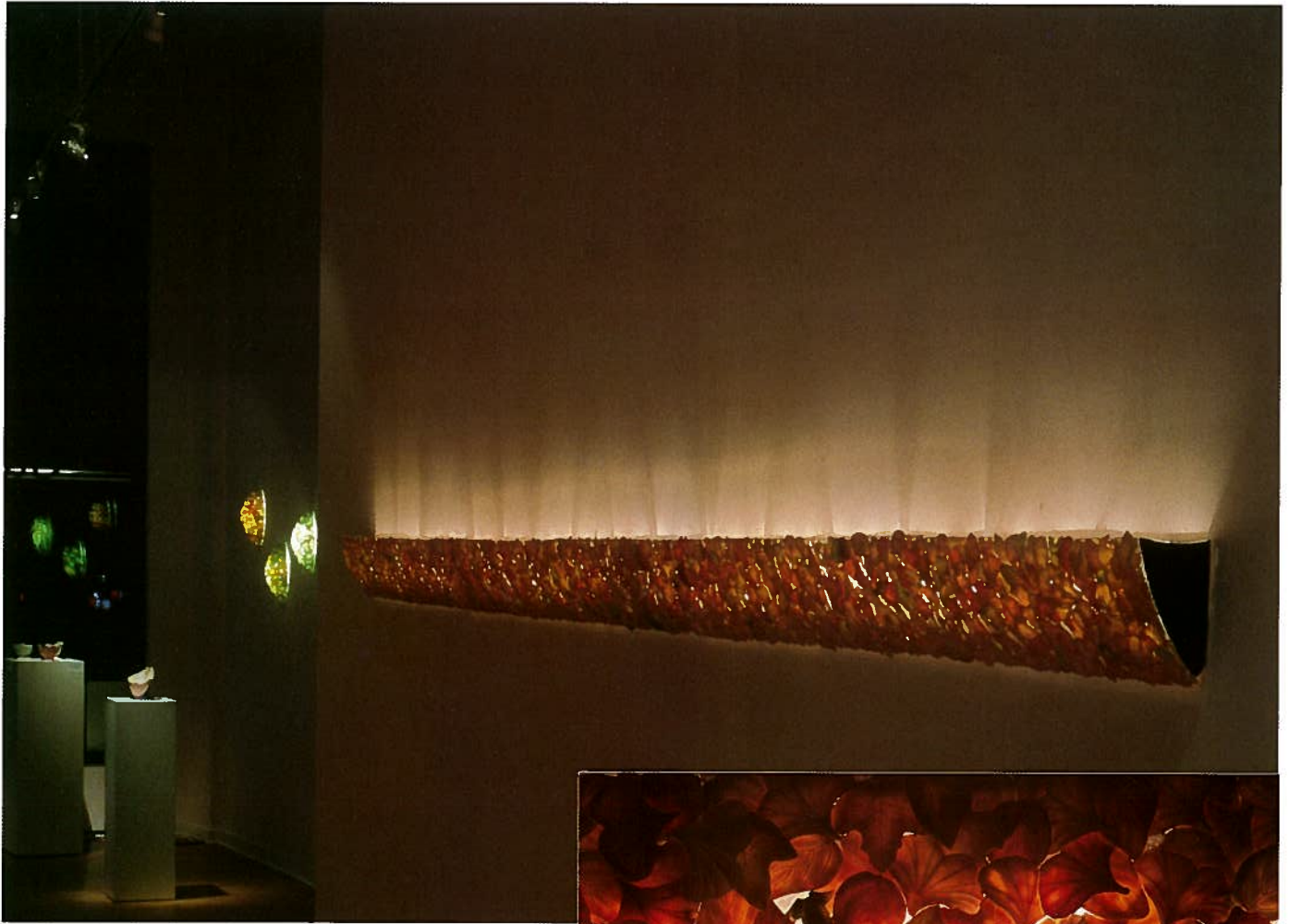


▲ **Renewal** | 2003

8 x 18 x 3 inches (20.3 x 45.7 x 7.6 cm)

Hand-built porcelain; nerikomi, slip painting, inlay;
unglazed; electric fired, cone 8; 23k gold leaf

Photos by artist



▲ Sanctuary Lighting | 2004

10 x 192 x 6 inches (25.5 x 488 x 15.2 cm)

Hand-built porcelain; slip painting;
unglazed; electric fired, cone 8;

Plexiglas core and fluorescent light

Photos by artist



“ Porcelain, pattern, color, and light are some of the keys available to aid me in unlocking beauty. While finding the right sequence and order can be challenging, every slight success excites my passion to continue this quest. ”



◀ East Wind | 2003

12 x 23 x 4 inches (30.5 x 58.5 x 10.2 cm)
Hand-built porcelain; nerikomi, slip painting, inlay; unglazed; electric fired, cone 8; 23k gold leaf
Photo by artist



▲ Following Sea | 2004

6 x 19 x 4 inches (15.2 x 48.3 x 10.2 cm)
Hand-built porcelain; nerikomi, slip painting, inlay; unglazed; electric fired, cone 8; 23k gold leaf
Photo by artist



◀ **Memories of Hope** | 2002

8 x 18 x 3 inches (20.3 x 45.7 x 7.5 cm)
Hand-built porcelain; nerikomi, slip
painting, inlay; unglazed; electric fired,
cone 8; 23k gold leaf
Photo by artist



Flying Home | 2002 ▶

9 x 18 x 3 inches (23 x 45.7 x 7.5 cm)
Hand-built porcelain; nerikomi, slip
painting, inlay; unglazed; electric
fired, cone 8; 23k gold leaf
Photo by artist



▲ **Autumn Dreams** | 2003

48 x 14 x 10 inches (122 x 35.5 x 25.5 cm)

Hand-built porcelain; slip painting;
unglazed; electric fired, cone 8;

Plexiglas core and fluorescent light

Photos by artist



▲ **Broadway Boogie** | 1980

6 x 7 inches (15.2 x 17.8 cm)

Hand-built porcelain; nerikomi, inlay; unglazed;
electric fired, cone 8

Photo by artist



▲ Phoenix Rising | 2003

5 x 5 x 5 inches (12.7 x 12.7 x 12.7 cm)

Hand-built porcelain; nerikomi, slip painting, inlay;
unglazed; electric fired, cone 8; 23k gold leaf

Photo by artist



▲ Leaf Pyre | 2004

12 x 8 x 7 inches (30.5 x 20.3 x 17.8 cm)

Hand-built porcelain; slip painting;
unglazed; electric fired, cone 8; glass core
and fluorescent light

Photo by artist

" My art has not seemed to change much over the years. The characteristics that defined it 20 years ago—color and light—remain as obvious visual evidence of my personal mission to understand and uncover expressions of beauty."



▲ Floral Group | 2005

5 x 5 inches (12.7 x 12.7 cm)

Hand-built porcelain; nerikomi, slip painting, inlay;
unglazed; electric fired, cone 8; 23k gold leaf

Photo by artist